



Downspout Filtration

Installation of MetalZorb® Filter Elements

Installation Procedure

- 1) Attach building downspout to downspout filter unit inlet. Attach the unit outlet to the downspout drain. Check T-plugs to ensure there are no leaks.

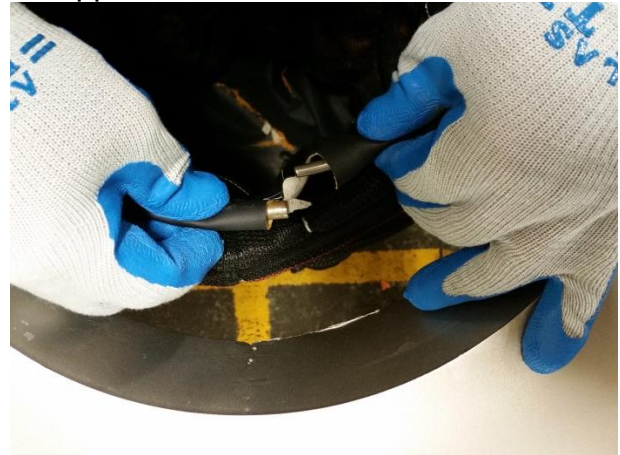


NOTE: Two outlet options are available for State specific regulations. Use the lower outlet only if your regulations prohibit standing water.

- 2) Inspect cabinet frame to ensure the rubber flap gasket on the support pan forms an effective seal. Pan should sit at the back of the box.



- 3) Uncouple snap ring from inside vinyl upper sleeve of filter element.



- 4) Place filter element under collection pan. Bring vinyl upper sleeve of filter up through tapered collar by starting at open end of snap ring and working your way around until ends of the ring can be reconnected.



- 5) Install rigid strainer into filter element until the strainer is flush with support pan.



Maintenance

Visual monitoring of the filter element to check performance should be done during monthly inspection. However, your site may require more or less frequent inspections depending on environmental conditions (i.e. rainfall, overhead trees, amount of rooftop runoff, excessive litter, etc.).

- 1) Remove and empty the rigid strainer.*
- 2) Remove filter element.* Filter elements should be changed when the unit is heavily fouled at the surface and sedimentation has built up, impeding flow of water.
NOTE: The used filter element should be allowed to drain and disposed as dry waste.
- 3) Remove and clean the pan.
- 4) Replace filter element with a new one, following the installation instructions.

*Check with your local waste disposal authority for proper disposal of exhausted filter elements and waste materials removed from the system.